



TOWN OF SHREWSBURY
100 MAPLE AVENUE
SHREWSBURY, MASSACHUSETTS 01545-5398

**TOWN OF SHREWSBURY TO CONDUCT SANITARY SEWER
REHABILITATIONS**

On behalf of the Town of Shrewsbury, New England Pipe Cleaning Co., Division of Diversified Infrastructure Services, Inc., will be performing sanitary sewer system rehabilitations in various locations of town within the highlighted areas shown by the attached map.

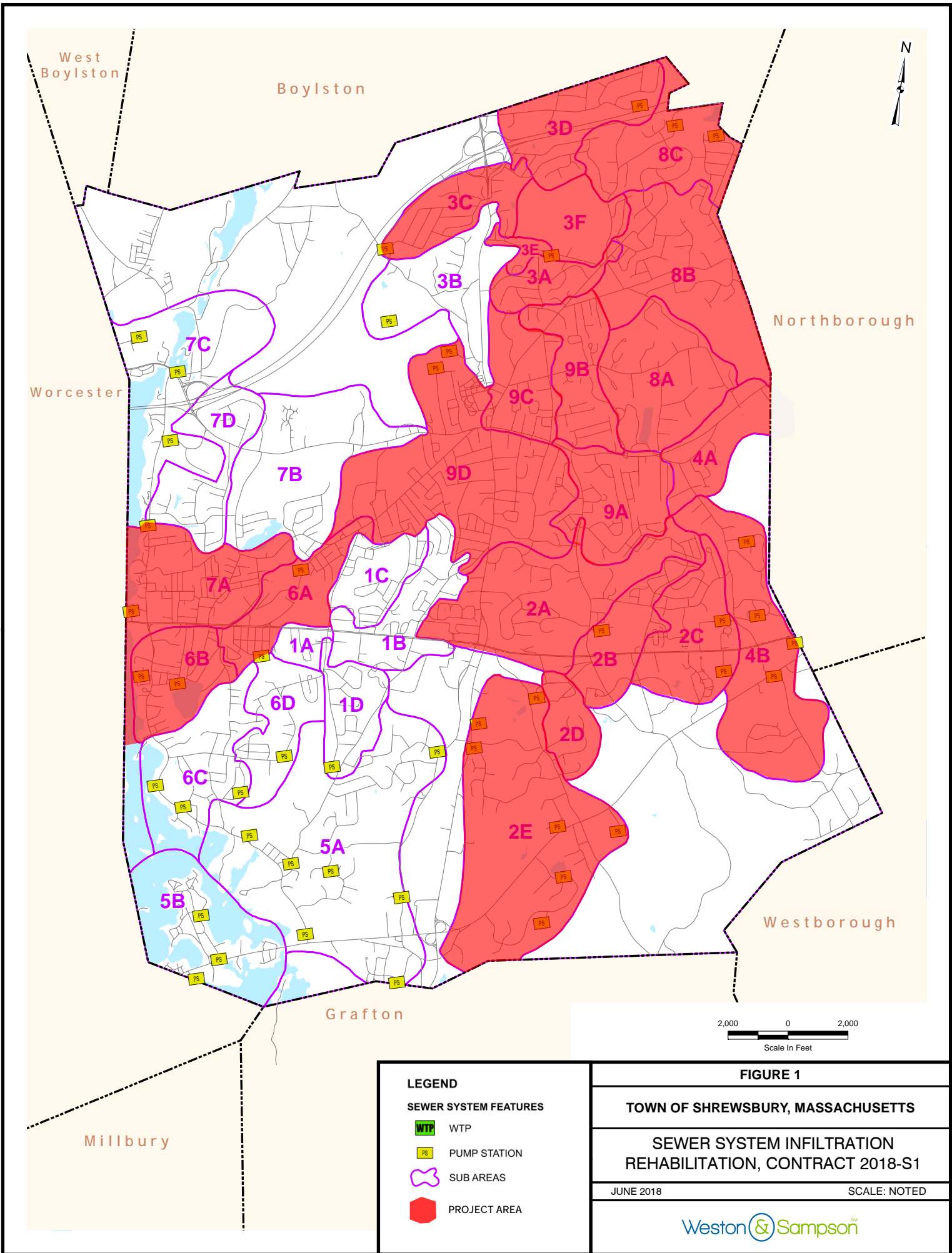
This work will be conducted June through October 2018.

During the rehabilitations, New England Pipe Cleaning Co. may need to access your property to complete repairs in sanitary sewer easements operated and maintained by the Town.

These rehabilitations are being performed as part of Shrewsbury's Sewer System Infiltration Rehabilitations, Contract 2018-S1. The purpose of the work is to remove sources of groundwater entering the sanitary sewer and perform any necessary structural repairs. By removing extra flow, Shrewsbury will reduce the amount of wastewater it sends to the regional Westborough Wastewater Treatment Plant. Also, performing structural pipe repairs reduces the risk for sewer pipe collapses.

We apologize for any inconvenience you may experience during this work and appreciate your continued cooperation while we strive to improve our sanitary sewer system.

If you have any questions, comments or concerns, please feel free to contact the Shrewsbury Engineering Department by phone at 508-841-8502 or by e-mail at engineering@shrewsburyma.gov.



LEGEND

SEWER SYSTEM FEATURES





-  WTP
-  PUMP STATION
-  SUB AREAS
-  PROJECT AREA

FIGURE 1

TOWN OF SHREWSBURY, MASSACHUSETTS

**SEWER SYSTEM INFILTRATION
REHABILITATION, CONTRACT 2018-S1**

JUNE 2018

SCALE: NOTED

Weston & Sampson[®]