



TOWN OF SHREWSBURY

Richard D. Carney Municipal Office Building
100 Maple Avenue
Shrewsbury, Massachusetts 01545-5338

June 24, 2022

WEEKLY REPORT OF CONFIRMED CASES OF COVID-19 IN THE TOWN OF SHREWSBURY

The Press Release of Friday, June 24, 2022 will be the last weekly COVID-19 report issued by the Town of Shrewsbury. The Central Massachusetts Regional Public Health Alliance will continue to update the Shrewsbury COVID-19 Dashboard on a weekly basis with case information.

The Town of Shrewsbury has been notified by the Central Massachusetts Regional Public Health Alliance ([CMRPHA](#)) that additional Shrewsbury residents have tested positive for Coronavirus (COVID-19). Public Health Officials are working closely with the individuals and will notify others that the individuals may have been in contact with. CMRPHA will continue to work with the Massachusetts Department of Public Health to ensure any affected residents are properly monitored, quarantined and isolated as each case dictates.

Positive cases in the Town of Shrewsbury as of **June 24, 2022: 8,595 (+53)**

Positive cases in the Town of Shrewsbury as last reported, **June 17, 2022: 8,542**

Click [HERE](#) for the daily Interactive Data Dashboard from the MA Department of Public Health

Click [HERE](#) for the Weekly COVID-19 Vaccination Report from the MA Department of Public Health

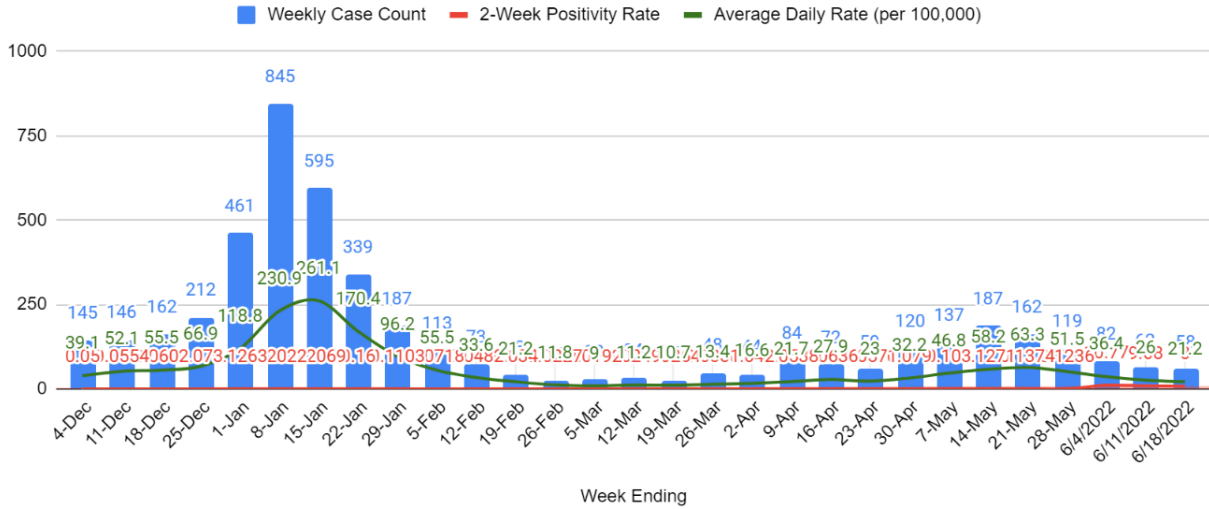
On May 20, 2022 the Shrewsbury Board of Health issued a mask advisory due to a surge in positive COVID-19 cases. The full advisory can be found [here](#). For information regarding masks and face coverings, please refer to CDC guidance linked [here](#). The Shrewsbury Board of Health order to require employers to report COVID-19 cases in the workplace will remain in place until further notice. Click the link [here](#) for more information.

Vaccine Info: All residents can book an appointment at vaxfinder.mass.gov or dial Mass 2-1-1 for assistance.

Shrewsbury Vaccination Data as of 6/24/2022			
	At least 1 Dose (% of Population)	Fully Vaccinated (% of Population)	Booster Dose (% of Population)
All Residents	91%	81%	52%

*Effective 3/18/2022, the Town will report vaccination data only as a % of the population.

All residents 5+ who live, work, or study in Massachusetts can now be vaccinated. People ages 5-17 can only get the Pfizer vaccine. People age 18 and older can get any vaccine. All residents 18+ are now eligible for a Moderna booster shot, and 12+ are eligible for a Pfizer booster shot, 6 months after receiving the second dose of a Moderna or Pfizer COVID-19 vaccine. All residents 18+ who received a single dose of the Johnson & Johnson COVID-19 vaccine are eligible for a Johnson & Johnson COVID-19 booster shot.



The Central Massachusetts Regional Public Health Alliance has also provided the following vaccination data as of June 24, 2022:

Town	Age Group	Individuals with at least one dose	Fully vaccinated individuals	Individuals with booster doses
Shrewsbury	5-11 Years	75%	67%	4%
Shrewsbury	12-15 Years	>95%	>95%	38%
Shrewsbury	16-19 Years	>95%	93%	59%
Shrewsbury	20-29 Years	82%	70%	41%
Shrewsbury	30-49 Years	>95%	85%	54%
Shrewsbury	50-64 Years	>95%	92%	69%
Shrewsbury	65-74 Years	>95%	>95%	82%
Shrewsbury	75+ Years	>95%	94%	77%
Shrewsbury	Total	91%	81%	52%

Data as of 6/24/2022

The Central Massachusetts Public Health Alliance has provided the following demographic data as of June 24, 2022:

Shrewsbury Age Categories	# Cases	% of Cases
0-9	1,123	13.07
10-19	1,446	16.82
20-30	1,166	13.57
30-39	1,157	13.46
40-49	1,250	14.54
50-59	1,211	14.09
60-69	684	7.96
>=70	558	6.49
Total	8,595	100

General Coronavirus Information: <https://www.cdc.gov/coronavirus/2019-ncov/index.html>

As a reminder, the Town of Shrewsbury is part of the coalition of the seven municipalities in the Central Massachusetts Regional Public Health Alliance ([CMRPHA](#)).

If you would like to reach out via email, you may do so at Health@worcesterma.gov, however, please note that this email is monitored Monday through Friday-8:30 AM to 5:00PM. Due to the high volume of COVID-19 inquiries, you may expect a response back within 1-2 business days.