



TOWN OF SHREWSBURY

Richard D. Carney Municipal Office Building
100 Maple Avenue
Shrewsbury, Massachusetts 01545-5338

February 11, 2022

WEEKLY REPORT OF CONFIRMED CASES OF COVID-19 IN THE TOWN OF SHREWSBURY

The Town of Shrewsbury has been notified by the Central Massachusetts Regional Public Health Alliance ([CMRPHA](#)) that additional Shrewsbury residents have tested positive for Coronavirus (COVID-19). Public Health Officials are working closely with the individuals and will notify others that the individuals may have been in contact with. CMRPHA will continue to work with the Massachusetts Department of Public Health to ensure any affected residents are properly monitored, quarantined and isolated as each case dictates.

Positive cases in the Town of Shrewsbury as of **February 11, 2022: 7,108 (+82)**

Positive cases in the Town of Shrewsbury as last reported, **February 4, 2022: 7,026**

14 Day Increase (from 1/29/2022 to today): +224

30 Day Increase (from 1/13/2022 to today): +1,189

60 Day Increase (from 12/14/2021 to today): +3,020

Click [HERE](#) for the daily Interactive Data Dashboard from the MA Department of Public Health

Click [HERE](#) for the Weekly COVID-19 Vaccination Report from the MA Department of Public Health

Effective October 12, 2021 the Shrewsbury Board of Health voted to require face coverings in all indoor private common spaces in the workplace and indoor private spaces open to the public, to require face coverings in all schools K-12, and to require employers to report COVID-19 cases in the workplace. The full text of the order can be found [here](#).

Vaccine Info: All residents can book an appointment at vaxfinder.mass.gov or dial Mass 2-1-1 for assistance.

Shrewsbury Vaccination Data as of 2.8.2022

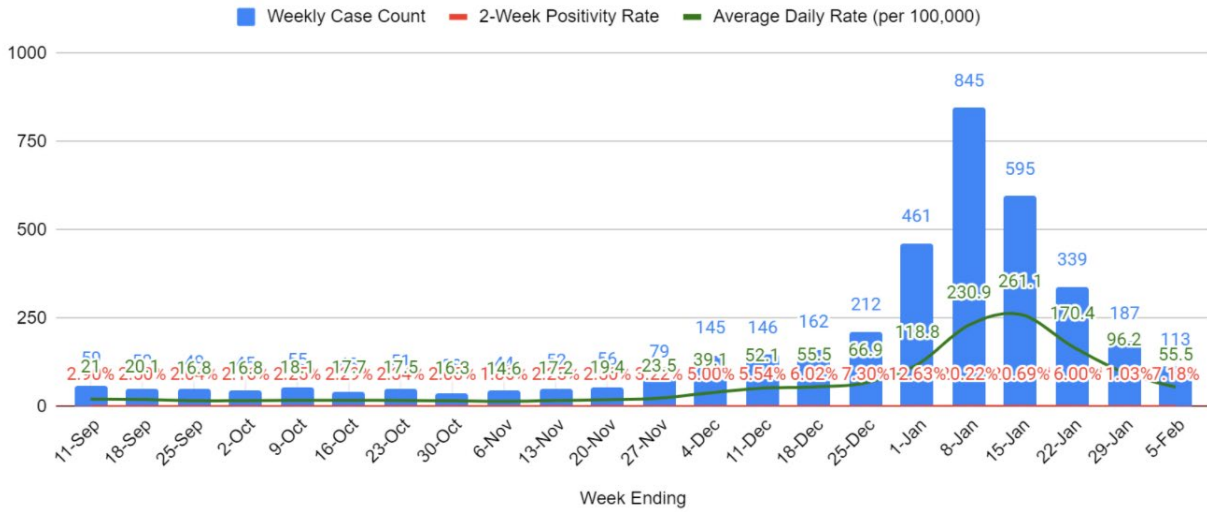
	At least 1 Dose	% of Population	Fully Vaccinated	% of Population	Booster Dose	% of Population
All Residents	35,721	90%	31,294	79%	18,468	47%

All residents 5+ who live, work, or study in Massachusetts can now be vaccinated. People ages 5-17 can only get the Pfizer vaccine. People age 18 and older can get any vaccine. All residents 18+ are now eligible for a Moderna booster shot, and 12+ are eligible for a Pfizer booster shot, 6

months after receiving the second dose of a Moderna or Pfizer COVID-19 vaccine. All residents 18+ who received a single dose of the Johnson & Johnson COVID-19 vaccine are eligible for a Johnson & Johnson COVID-19 booster shot.

The Central Massachusetts Regional Public Health Alliance has provided the following data for Shrewsbury. The Town of Shrewsbury is now in the **Red** category.

- Group Grey** Population of 10,000 to 50,000
Less than or equal to 10 total cases
- Green** Less than 10 average cases per 100,000 residents AND greater than 10 total cases
- Yellow** Greater than or equal to 10 average cases per 100,000 residents OR greater than or equal to 5% positivity
- Red** Greater than or equal to 10 average cases per 100,000 residents AND greater than or equal to 5% positivity



The Central Massachusetts Regional Public Health Alliance has also provided the following vaccination data as of February 8, 2022:

Town	Age Group	Individuals with at least one dose	Individuals with at least one dose per capita	Fully vaccinated individuals	Fully vaccinated individuals per capita	Individuals with booster doses	Individuals with booster doses per capita
Shrewsbury	5-11 Years	2,247	70%	1,811	57%	1	0%
Shrewsbury	12-15 Years	2,172	>95%	1,919	92%	549	26%
Shrewsbury	16-19 Years	2,182	>95%	1,953	93%	1,090	52%
Shrewsbury	20-29 Years	4,239	81%	3,584	69%	1,909	37%
Shrewsbury	30-49 Years	9,877	>95%	8,657	85%	5,035	49%
Shrewsbury	50-64 Years	8,406	>95%	7,566	91%	5,317	64%
Shrewsbury	65-74 Years	3,599	>95%	3,182	>95%	2,529	76%
Shrewsbury	75+ Years	2,996	>95%	2,622	91%	2,038	71%
Shrewsbury	Total	35,721	90%	31,294	79%	18,468	47%

The Central Massachusetts Regional Public Health Alliance has also provided the following demographic data as of February 4, 2022:

Shrewsbury Age group	# of Cases	% of Cases
0-9	906	12.75
10-19	1,222	17.19
20-30	1,002	14.1
30-39	949	13.35
40-49	1,020	14.35
50-59	1,006	14.15
60-69	543	7.64
>=70	460	6.47
Total	7,108	100

The Town of Shrewsbury is committed to keeping the public informed during this period of the Coronavirus (COVID-19) pandemic. The Town will report positive cases and vaccination data each Friday by 4:30PM*. The Town Manager's Office will update the public with any new developments or changes in Town operations including confirmed cases of COVID-19 in Shrewsbury, in the following order:

1. [Website Newsflash](https://shrewsburyma.gov/list.aspx) (visit <https://shrewsburyma.gov/list.aspx> to subscribe)
2. [Alert for COVID-19 Page](https://shrewsburyma.gov/list.aspx) (visit <https://shrewsburyma.gov/list.aspx> to subscribe)
3. [Cases Tab on COVID-19 Page](#)
4. Social Media Accounts ([Facebook](#) & [Twitter](#))

General Coronavirus Information: <https://www.cdc.gov/coronavirus/2019-ncov/index.html>

As a reminder, the Town of Shrewsbury is part of the coalition of the seven municipalities in the Central Massachusetts Regional Public Health Alliance ([CMRPHA](#)).

If you would like to reach out via email, you may do so at Health@worcesterma.gov, however, please note that this email is monitored Monday through Friday-8:30 AM to 5:00PM. Due to the high volume of COVID-19 inquiries, you may expect a response back within 1-2 business days.